



689_MobileLink_Teaserflyer_en_2022-11_001_MAF-03154 1.0



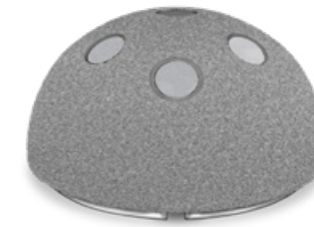
TrabecuLink Cluster Hole



TrabecuLink Multi Hole



TiCaP Cluster Hole



PlasmaLink Cluster Hole



PlasmaLink Multi Hole



TiCaP Multi Hole



Cancellous Bone Screws

LINK stands for the highest quality components “Made in Germany” that can be flexibly combined and meet your special demands.

The LINK advantages

- **Trusted** quality – „Made in Germany“
- **Tailored** system
- **Flexible** options

1 Cunningham B W et al.: “General Principles of Total Disc Replacement Arthroplasty”, Spine, Vol. 28, No. 20 Suppl., 2003.

2 Ullmark G, Sorensen J, Nilsson O. Analysis of bone formation on porous and calcium phosphate-coated acetabular cups: a randomised clinical [18F]fl uoride PET study. Hip international: the journal of clinical and experimental research on hip pathology and therapy. 2012;22(2):172-8.

3 Cecile M. Bidan, Krishna P. Kommareddy, Monika Rumpler, Philip Kollmannsberger, Yves J.M. Brechet, Peter Fratzl, John W.C. Dunlop et al. (2012) How Linear Tension Converts to Curvature: Geometric Control of Bone Tissue Growth. PLoS ONE 7(5): e36336

4 Pascal Joly, Georg N. Duda, Martin Schöne, Petra B. Welzel, Uwe Freudenberg, Carsten Werner, Ansgar Petersen et al. (2013) Geometry-Driven Cell Organization Determines Tissue Growths in Scaffold Pores: Consequences for Fibronectin Organization. PLoS ONE 8(9): e73545. <https://doi.org/10.1371/journal.pone.0073545>

5 Steinemann SG: Compatibility of Titanium in Soft and Hard Tissue e – The Ultimate is Osseointegration; Materials for Medical Engineering, WILEY-VCH, Volume 2, Page 199-203

6 Stroh, D. Alex, et al. „Dual-mobility bearings: a review of the literature.“ Expert review of medical devices 9.1 (2012): 23-31.

MobileLink Acetabular Cup System

The Next Leap in Cup Evolution

One single sophisticated system that offers you all advantages for hip replacement.

The system benefits

- Uncemented **primary & revision**
- Wide **range of matching components**
- One **integrated instrument platform**



MobileLink Acetabular Cup System

Trusted Quality Proven technologies

Tailored System Fine-tuned to your needs

Flexible Options One platform – perfectly adaptable



Wide range of sizes

- 42 - 72 mm
- 74 - 80 mm, on request



Latest material selection

- E-DUR polyethylene
- X-LINKed
- Ceramic



Streamlined surgical experience

through simple, ergonomic instruments and color coding



Rough Titanium-Plasma + HX Coating → TiCaP

Double layer coating promotes bony ongrowth^{1,2}



Triple locked inserts

Secure fixation of polyethylene insert to shell by a “snap-lock mechanism”, conical coupling and antirotation tabs



3 dimensional TrabecuLink structure

The pore size, porosity and type of structure ensure an excellent cell fill^{3,4,5}



50/36 – Outside small, inside big

36 mm prosthesis heads starting from 50 mm shell size for polyethylene inserts



Color coding

for streamlined workflow



Intraoperative flexibility

One instrument platform for primary and revision surgery



Dual Mobility Insert

Dual mobility leads to reduced risk of dislocation and increased range of motion (RoM)⁶



Face Changer

Shell/Insert Adapter (Face Changer) to adjust inclination or/and offset



Variable bone screw options

- Cluster Hole Shell screw holes are pre-closed with removable caps
- +/-15° screw angulation possible